

## Champion Modular Panel

The industry spoke, we listened and created a new panel with all the engineering accomplishments of the Professional panel but at a lower price point. Designed at just .75 of an inch high, the Champion panel delivers amazing strength underfoot while providing the safety and performance athletes and their moms demand.

	Dimensions	30" x 30" x .75" (6 lbs.) 5.44 sq. ft. Usable Dims: 28" x 28" x .75"
	GMAX	119
	Vertical Drainage	1582 inches per hour
	Horizontal Drainage	126 inches per hr
	Load Capacity	Exceeds 370 lbs. per sq. in
	Storage Capacity	1.85 gallons
	Do It Yourself	Quick install in hours not days.
	Construction	.75 inch high panel with drainage holes and patented turf barbs.
	Recyclable	Made from 100% Recyclable material.
	Warranty	Limited Lifetime Warranty



**Maximum Drainage**  
Permeable Design allows for moisture to drain meeting most county codes of ordinance



**Economical Choice**  
Most cost effective option compared to pouring concrete



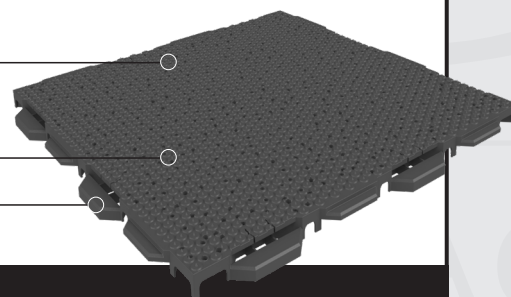
**Portable**  
Modular design allows panels to be moved after installation



Champion  
Modular Panel

Drain-Through  
Technology

16-Interlocking  
Connections



Learn more at [ultrabasesystems.com](http://ultrabasesystems.com)

### Recommended Uses:



Landscape



Sports Fields



Playground



Rooftop



Bocce

**Additional Facts:**

**Locking System**

16 interlocking teeth ensure perfect alignment from panel to panel

**Nonslip Turf System**

The 3000 patented turf barbs per panel hold turf in place

**Installing Over Uneven Terrain**

Designed to follow the contours of uneven terrain

**Materials**

Proprietary blend of Polypropylene and other materials

**Available Colors:**



Black

